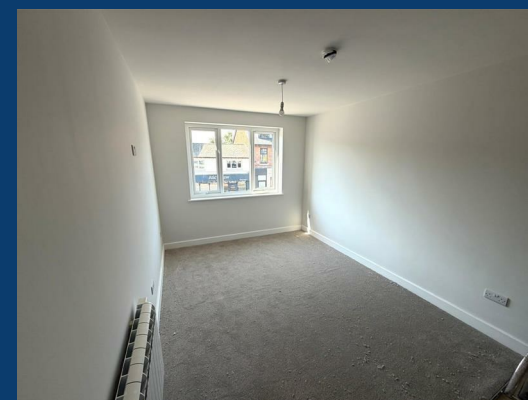




# Water Lane

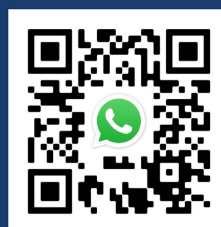
Wilmslow



£1,495 Per month




SEND US A MESSAGE



 **SPENCER HARVEY**  
PASSIONATE ABOUT PROPERTY



Energy Efficiency Rating		Current	Potential
Very energy efficient - lower running costs			
(92 plus) <b>A</b>			
(81-91) <b>B</b>			
(69-80) <b>C</b>			
(55-68) <b>D</b>			<b>67</b>
(39-54) <b>E</b>		<b>45</b>	
(21-38) <b>F</b>			
(1-20) <b>G</b>			
Not energy efficient - higher running costs			
<b>England &amp; Wales</b>		EU Directive 2002/91/EC 	

# PROPERTY DESCRIPTION

**\*\*AVAILABLE NOW\*\***

Situated in the very heart of Wilmslow on the ever-popular Water Lane, this beautifully refurbished two-bedroom apartment offers stylish, contemporary living just moments from an excellent selection of shops, restaurants, cafés and transport links.

The property has been freshly refurbished throughout to a high standard, creating a bright and modern home ready for immediate occupation. The spacious living area provides the perfect space to relax and entertain, while the contemporary fitted kitchen offers ample storage and workspace.

There are two well-proportioned bedrooms, both benefiting from plenty of natural light, alongside a modern bathroom finished with quality fixtures and fittings.

A particular benefit of the property is the allocated parking space to the rear, providing convenient off-road parking in this highly desirable central location.

## KEY FEATURES

**LET AVAILABLE DATE:**  
1st July 2026  
**DEPOSIT:** £1,725  
**MIN TENANCY:** Add Text  
**LET TYPE:** Add Text  
**FURNISH TYPE:** Not specified

**EPC RATING:**  
E

**COUNCIL TAX BAND:**  
A